

NOVOL

spray

spray products

SPRAY is a line of high-quality spray products which formulas have been developed and tested at the NOVOL R&D Laboratory. The SPRAY products are for professional and DIY use, without the need for spray guns and air compressors. The extremely short drying time cuts down the time to complete the repairs. Moreover, the available fan nozzle produces a spray jet with application properties resembling the operation of a professional spray gun.



novol.com/en

ANTIGRAVEL

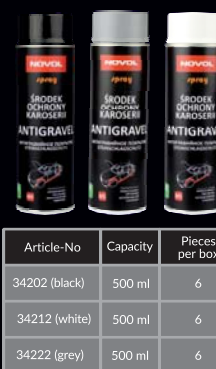
A product that gives a durable and flexible coat with a fine grain structure that is resistant to the impact of stones and gravel. Protects against petrol, oils, water and salt. It also features sound-dampening and sound-proofing properties. Made from synthetic resins; contains no asphaltic or bituminous compounds. Coatable with any acrylic coats.

Color:

VOC II/B/e limit = 840 g/l
VOC < 580 g/l **VOC OK**



spray



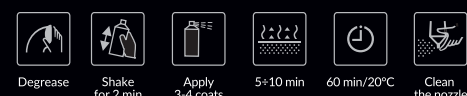
Article-No	Capacity	Pieces per box
34202 (black)	500 ml	6
34212 (white)	500 ml	6
34222 (grey)	500 ml	6

BITUMEN UNDERBODY COATING

A product that forms a flexible coat that resists weather, weak acids and alkalis, as well as stone chip damage. The coat displays sound-proofing and sound-dampening properties. The product is a one-component formula that dries fast and exhibits good hiding power.

Color: colorless

VOC II/B/e limit = 840 g/l
VOC < 710 g/l **VOC OK**



Article-No	Capacity	Pieces per box
90397	500 ml	6

CAVITY WAX

A wax-based preservative for anti-corrosive preservation of closed profiles in the car body. Resistant to weather, as well as to weak alkali and acids. Good penetration (creeping into the profile), gives a flexible, sealed coat to protect against water and salt. The kit includes an adapter for applying in the confined interior of closed profiles through processing openings.

Color: colorless

VOC II/B/e limit = 840 g/l
VOC < 570 g/l **VOC OK**



Article-No	Capacity	Pieces per box
34012	500 ml	6

complementary products

NOVOL

PROFESSIONAL

- PLUS 780 - silicone remover, article-no: 39042
- PLUS 800 - initial degreaser, article-no: 39022
- BUMPER FIX - putty for plastics, article-no: 1171
- SOFT PLUS - multifunctional putty, article-no: 1245
- FINISH - finishing putty, article-no: 1120

SPECTRAL

COLOR TECHNOLOGY

- Spectral PREFILL - basecoat selected according to the required colour code, article-no: 89092
- Spectral EXTRA 895 - fade out thinner, article-no: 89032

Quattro

REPAIR PRODUCTS

- abrasive cloth: > Ultra Fein (grey), article-no: 39526
> Very Fein (red), article-no: 39529
- sanding blocks: > type A, article-no: 62802,
> type E, article-no: 62902
- microfibre cloth > blue, article-no: 61012
> green, article-no: 90440

NOVOL

NON-PAINT

- dust-absorbing cloth, article-no: 39540
- masking consumables: > painting paper:
 - 40 g, 30 cm x 280 m, article-no: 39300
 - 40 g, 60 cm x 280 m, article-no: 39301
 - 40 g, 90 cm x 280 m, article-no: 39302
 - 40 g, 120 cm x 280 m, article-no: 39303
 - 45 g, 30 cm x 280 m, article-no: 39310
 - 45 g, 60 cm x 280 m, article-no: 39311
 - 45 g, 90 cm x 280 m, article-no: 39312
 - 45 g, 120 cm x 280 m, article-no: 39313
 - 50 g, 90 cm x 280 m, article-no: 90671
- > protective foil:
 - ERG, 4 m x 5 m, article-no: 39398
 - NOVOL STANDARD, 4 m x 5 m, article-no: 39397
 - NOVOL PREMIUM, 4 m x 7 m, article-no: 39388
- masking NOVOL on roll, 4 m x 150 m, article-no: 90368
- > painting tape:
 - NOVOL width 19 mm, length 50 m, article-no: 39215
 - NOVOL width 25 mm, length 50 m, article-no: 39216
 - NOVOL width 30 mm, length 50 m, article-no: 39217
 - NOVOL width 38 mm, length 50 m, article-no: 39218
 - NOVOL width 48 mm, length 50 m, article-no: 39219
- plastic putty knife, article-no: 39715
- paper towels, article-no: 39510

STRUCTURE TOPCOAT

A fast-dry decorative acrylic topcoat with excellent hiding properties and a fine grain structure that imitates plastics. Intended for coating of surfaces made of metals, aluminium, wood, old paint coats and polyester laminates.

Colors:

VOC II/B/e limit = 840 g/l
VOC < 680 g/l **VOC OK**



spray



Article-No	Capacity	Pieces per box
34502 (black)	500 ml	6
34512 (anthracite)	500 ml	6

ACRYLIC TOPCOAT

A fast-dry decorative acrylic topcoat with excellent hiding properties. Intended for coating of surfaces made of metals, aluminium, wood, old paint coats and polyester laminates.

Colors in matt, half-matt, gloss

VOC II/B/e limit = 840 g/l
VOC < 715 g/l **VOC OK**



Article-No	Capacity	Pieces per box
34312 (white gloss)	500 ml	6
34302 (black gloss)	500 ml	6
34352 (black matt)	500 ml	6
34342 (satin black)	500 ml	6

CLEARCOAT

A fast-dry acrylic clearcoat with very good flowability and polishability. Perfect for finishing coats of basecoats and acrylic coats. Available in Glossy and Matt versions.

Color: colorless

VOC II/B/e limit = 840 g/l
VOC < 670 g/l **VOC OK**



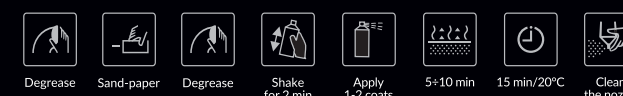
Article-No	Capacity	Pieces per box
34002	500 ml	6
90406 (matt)	500 ml	6

PLASTIC PRIMER

A fast-dry primer which improves adhesion of acrylic primers, acrylic coats and polyurethane clearcoats to various substrates (steel and galvanized steel, primarily plastics (including polypropylene and its mixtures).

Color: colorless

VOC II/B/e limit = 840 g/l
VOC < 710 g/l **VOC OK**



spray



Article-No	Capacity	Pieces per box
34482	500 ml	6

ACRYLIC PRIMER

A one-component acrylic filling primer intended for levelling of filled-out surfaces and old paint coats. Perfect for spot repairs. The main advantage is a very short drying time which enables fast repairs.

Colors:

VOC II/B/e limit = 840 g/l
VOC < 720 g/l **VOC OK**



Article-No	Capacity	Pieces per box
34402 (grey)	500 ml	6
34412 (black)	500 ml	6

CONTROL SPRAY

A fast-dry control spray gives a thin control layer on surfaces to be sanded (e.g. putties/fillers, primers). This facilitates detection of all irregularities and sanding scratches to make corrections at spots requiring further processing. Proper assessment of sanded surface preparation ensures high quality of repairs.

Colors:

VOC II/B/e limit = 840 g/l
VOC < 740 g/l **VOC OK**



Article-No	Capacity	Pieces per box
34022	500 ml	6

WHEEL SPRAY

A fast-dry acrylic clearcoat for restoration and repairs of wheel rims made of steel and light metal alloys, as well as for plastic hub caps. Very good hiding properties, durable gloss and resistance to water, petrol and weather. Gives a metallic (aluminium) effect on the applicable surfaces. Secure with a clear-coat to increase its durability.

Colors:

VOC II/B/e limit = 840 g/l
VOC < 690 g/l **VOC OK**



Article-No	Capacity	Pieces per box
34102 (silver)	500 ml	6
34112 (steel)	500 ml	6
34122 (black matt)	500 ml	6
34132 (black)	500 ml	6

PAINT REMOVER

The product is intended for removing the majority of paint types and other coatings from various surfaces (e.g. metal, stone, wood, glass, asphalt or concrete). It acts by effectively and quickly penetrating the coating and weakening its bonding to the substrate to enable easy removal.

Colour: colourless

VOC II/B/e limit = 850 g/l
VOC < 449 g/l **VOC OK**



Article-No	Capacity	Pieces per box
34032	500 ml	6

Warning! Clean nozzle after use; turn the can upside down and spray for approx. 5 s until the nozzle is empty.

The product features a FAN nozzle which gives the spray jet with the application similar properties to a conventional spray gun nozzle.

NOVOL

spray

-NEW-
DESIGN



NOVOL

spray




ul. Żabikowska 7/9
62-052 Komorniki
tel. (+48) 61 810 98 00

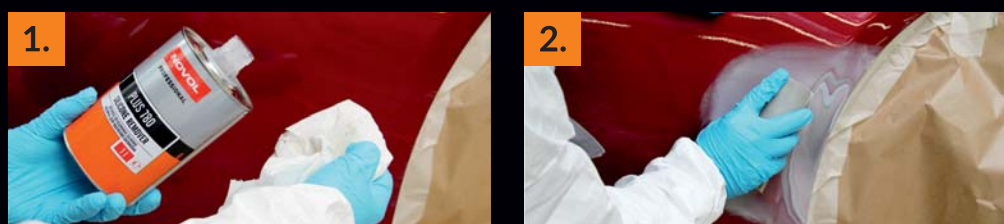
facebook.com/novolPL



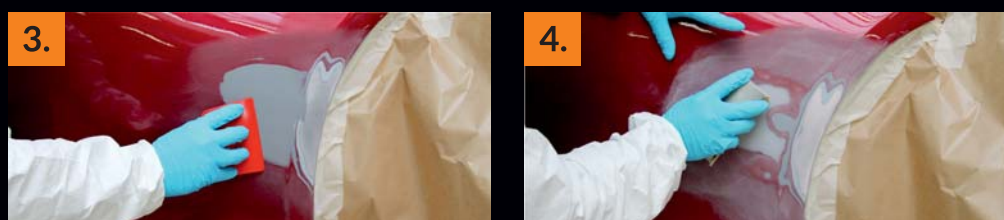
novol.com/en

SHOPPING LIST:

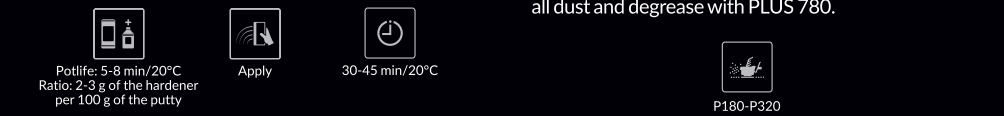
- PLUS 780 – silicone remover
- BUMPER FIX – putty for plastics
- ACRYLIC PRIMER 
- STRUCTURE TOPCOAT 
- Spectral PREFILL – basecoat selected according to the required colour code
- CLEARCOAT 
- Spectral EXTRA 895 – fade out thinner
- QUATTROgrey abrasive cloth
- Small QUATTRO sanding block
- Dust-absorbing cloth
- Masking consumables: Painting paper or film NOVOL painting tape
- Plastic putty knife
- Paper towels



1. Thoroughly wash the surface with water and a detergent. Next, degrease with the PLUS 780 silicone remover.



2. Mask the surfaces which will not be repaired. Sand down the defects with P180 to 240 sandpaper. Blow away all dust. Degrease again with PLUS 780.



3. If required, prepare the defects for painting with the BUMPER FIX putty for plastics.



4. Sand down the cured putty successively with the following grain sizes: P180, P280, and P320. Blow away all dust and degrease with PLUS 780.



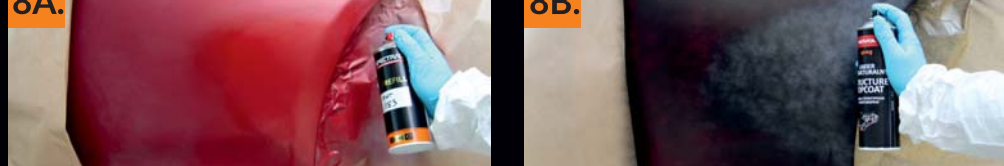
5. Improve adhesion by applying the PLASTIC PRIMER on all areas sanded down to the plastic substrate.



6. Apply the ACRYLIC PRIMER to the area of repair.



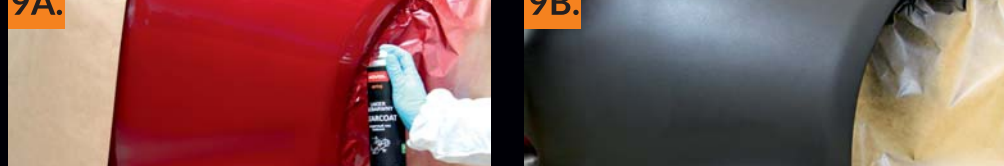
7. Sand down the cured ACRYLIC PRIMER coat along with the adjacent non-damaged surfaces (use P400 to P500 when dry sanding or P800 to P1000 when wet sanding or the QUATTRO grey abrasive cloth). Blow away all dust. Degrease with PLUS 780.



8A. Order a Spectral PREFILL basecoat which matches the colour code or colour chip. Apply the basecoat to the repaired part.



8B. If you want to reproduce the texture of plastic, apply the STRUCTURE TOPCOAT.





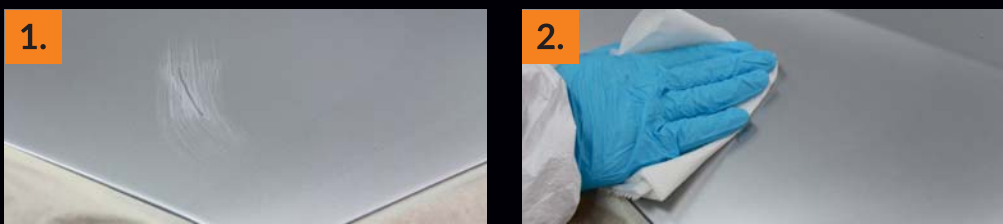
9A. Wipe the basecoat surface clean with the dust-absorbing cloth. Apply the CLEARCOAT. If necessary, apply two very thin layers of the EXTRA 895 clearcoat fade out thinner at the interface of the original coat and the new CLEARCOAT.



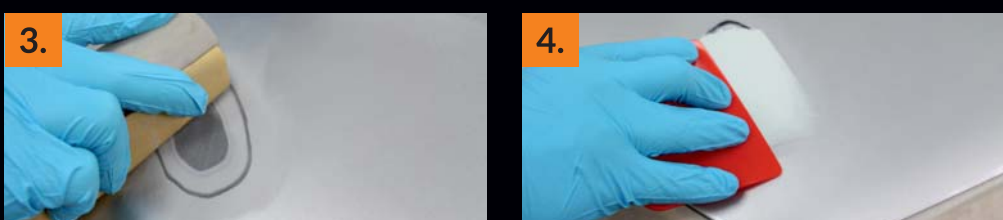
9B. The finish after the application of the STRUCTURE TOPCOAT.

SHOPPING LIST:

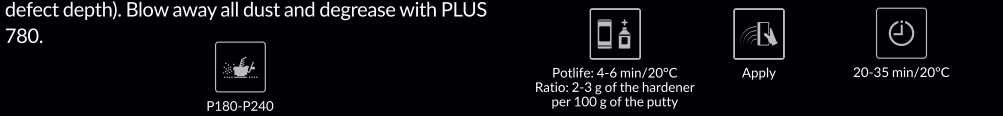
- PLUS 780 – silicone remover
- SOFT PLUS multifunctional putty or FINISH finishing putty
- ACRYLIC PRIMER 
- Spectral PREFILL basecoat selected according to the required colour code
- CLEARCOAT 
- Spectral EXTRA 895 – fade out thinner
- QUATTRO microfibre cloth
- QUATTRO sanding block
- Dust-absorbing cloth
- Plastic putty knife
- Masking consumables: Painting paper or film NOVOL painting tape
- Paper towels



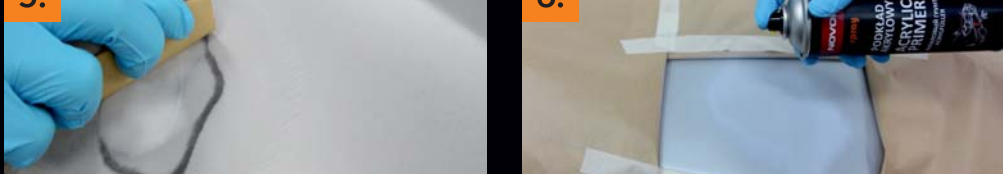
1. Assess the damage to be repaired (this process is intended for defects near part edges with the repair spot size not exceeding an A4 sheet of paper).



2. Thoroughly degrease the area to be repaired with the PLUS 780 silicone degreaser.



3. Sand down the defect (the scratch or the dent) with P180 to 240 sandpaper (choose the grain size according to the defect depth). Blow away all dust and degrease with PLUS 780.



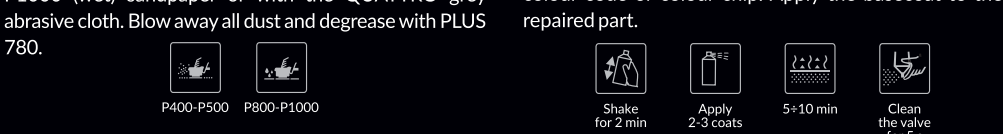
4. If required, prepare the defect with the SOFT PLUS multifunctional putty or the FINISH putty.



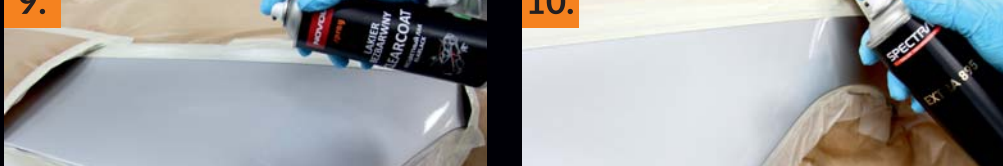
5. Sand down the cured putty with P180 to P320 sandpaper. Blow away all dust and degrease with PLUS 780.



6. Mask the adjacent surface and apply the ACRYLIC PRIMER on the area of repair.



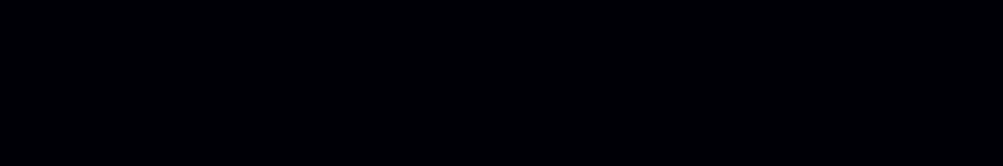
7. Sand down the primer with P400 to P500 (dry) or P800 to P1000 (wet) sandpaper or with the QUATTRO grey abrasive cloth. Blow away all dust and degrease with PLUS 780.



8. Order a Spectral PREFILL basecoat which matches the colour code or colour chip. Apply the basecoat to the repaired part.



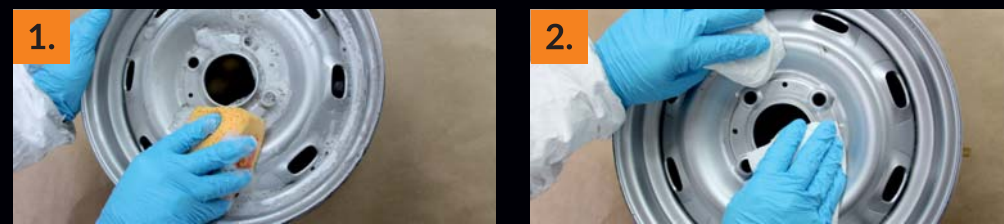
9. Wipe the basecoat surface clean with the dust-absorbing cloth. Apply the CLEARCOAT to the basecoat surface with an overlap on the sanded down original coat.



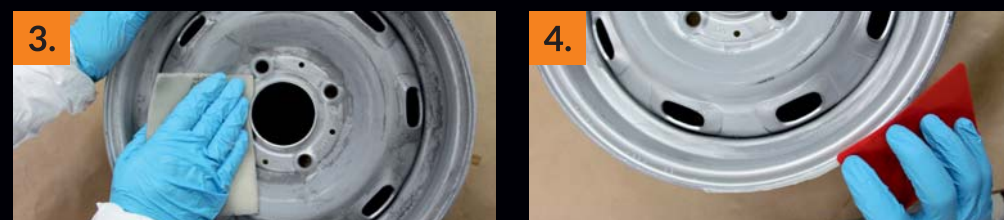
10. Apply two very thin layers of the EXTRA 895 clearcoat fade out thinner at the interface of the original coat and the new CLEARCOAT.

SHOPPING LIST:

- PLUS 780 – silicone remover
- SOFT PLUS multifunctional putty or FINISH finishing putty
- ACRYLIC PRIMER 
- WHEEL SPRAY 
- CLEARCOAT 
- QUATTROred abrasive cloth
- Dust-absorbing cloth
- Plastic putty knife
- Masking consumables: Painting paper or film NOVOL painting tape
- Paper towels



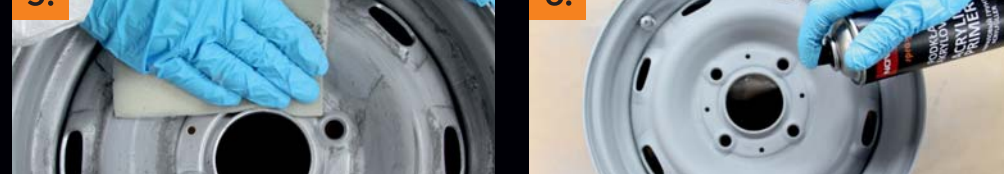
1. Thoroughly wash the wheel rim with water and a detergent.



2. Degrease with the PLUS 780 silicone remover.



3. Sand down the defects (scratches or dents) with P180 to 240 sandpaper. Blow away all dust and degrease with PLUS 780.



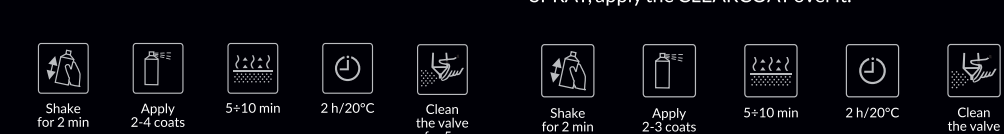
4. If required, prepare the defect with the SOFT PLUS multifunctional putty or the FINISH putty.



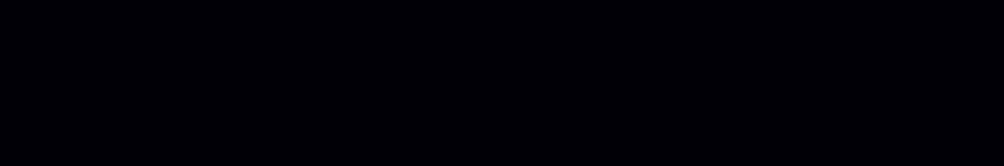
5. Sand down the cured putty with P280 to P320 sandpaper. Blow away all dust and degrease with PLUS 780.



6. Apply the ACRYLIC PRIMER to the area of repair. Sand down with P400 to P500 (dry) or P800 to P1000 (wet) sandpaper. Blow away all dust and degrease with PLUS 780.



7. Apply the WHEELSPRAY in the colour of choice.



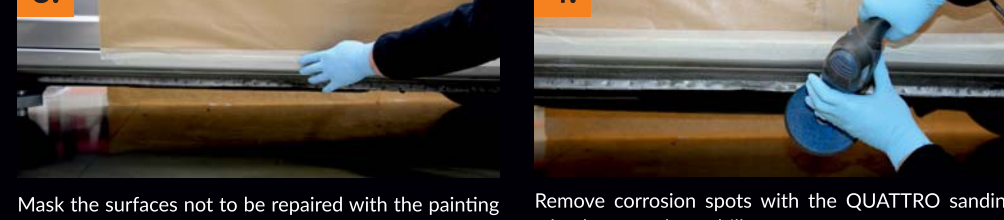
8. If you do not want to retain the mat finish of the WHEEL SPRAY, apply the CLEARCOAT over it.

SHOPPING LIST:

- PLUS 800 – initial degreaser
- ACRYLIC PRIMER 
- ANTIGRAVEL 
- Spectral PREFILL – basecoat selected according to the required colour code
- CLEARCOAT 
- BITUMEN UNDERBODY COATING 
- CAVITY WAX 
- QUATTROred abrasive cloth
- QUATTRO dry sandpaper: P400 & P500
- Plastic putty knife
- Masking consumables: Painting paper or film NOVOL painting tape
- Paper towels



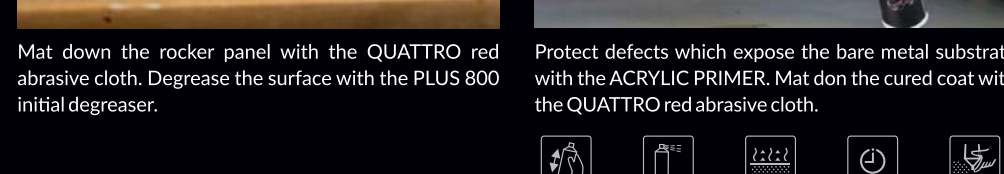
1. Thoroughly wash the surface to be repaired with water and a detergent.



2. Degrease with the PLUS 800 initial degreaser.



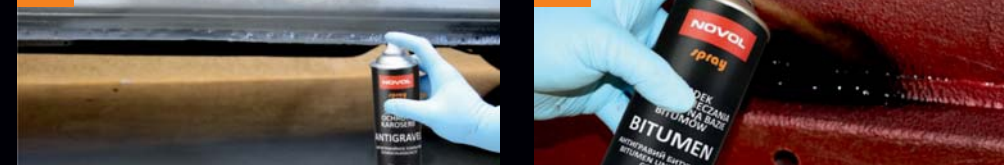
3. Mask the surfaces not to be repaired with the painting paper or film.



4. Remove corrosion spots with the QUATTRO sanding wheel mounted on a drill.



5. Mat down the rocker panel with the QUATTRO red abrasive cloth. Degrease the surface with the PLUS 800 initial degreaser.



6. Protect defects which expose the bare metal substrate with the ACRYLIC PRIMER. Mat don the cured coat with the QUATTRO red abrasive cloth.



7A. Protect the processed surface with the ANTIGRAVEL which will give a fine-grain protective layer.



7B. Bitumen-based compound; the finish. Do not coat over.



8A. If you want a textured finish in the car body colour, use a basecoat in the Spectral PREFILL container with the matching colour code.



8B. Preserve the closed sections with the CAVITY WAX.



9A. Wipe the cured basecoat layer clean with the dust-absorbing cloth and coat it with the CLEARCOAT.

